

THE NEWSLETTER OF
WOLFSON COLLEGE
CAMBRIDGE



RingTrue

Issue 19 Spring 2016

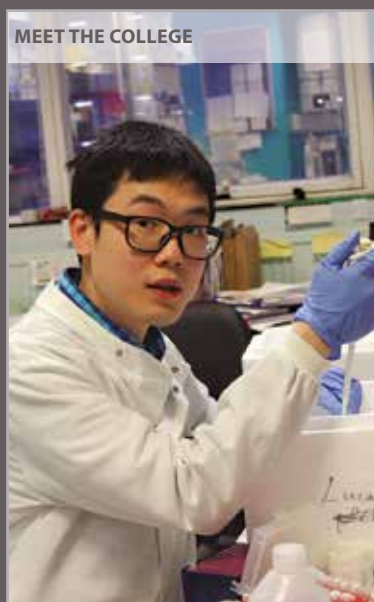
RING TRUE



THE NEWSLETTER OF WOLFSON COLLEGE CAMBRIDGE

From the President	3
Notes and News	4
Meet the College	6
Culture and Sport	8
WCSA News	9
Alumni and Development News.....	10
Wolfson in 50 Words.....	11
Wolfson's Gardens	12
Future Events	12

Front Cover: Wolfson members at the opening of the Lent Term art exhibition, 'Kate Green: Where Do Ideas Come From'
Cover photograph: Keith Heppell
Design: H2 Associates, Cambridge



10 | DEVELOPMENT NEWS



Stay up to date with Wolfson news on Facebook at:
www.facebook.com/WolfsonCollege

FROM THE EDITOR



Our 50th Anniversary events were deliberately spread over two academic years to give more students a chance to be

involved in the celebrations. Our Development Director Karen Stephenson covers the highlights in her report, in particular the new scholarships funded by The ALBORADA Trust.

The contents of *Ring True* are finalised in January, therefore we really only cover events in the Michaelmas Term and the first few weeks of 2016. The last issue of *The Wolfson Review* covered the entire academic year 2014–2015 so I don't normally include material going back to last summer – except for anniversary events.

The President in his piece presents a nice overview of our student body and celebrates their academic success in the past year. Our new Vice-President Graham Allen is introduced on page 2 and John Naughton reflects about his time as our previous Vice-President – accompanied by a longer article online on WolfsonPlus.

The diversity of Wolfson's membership is, I hope, represented in the profiles in Meet the College. For example, one of Wolfson's PhD students spent last summer fighting the Ebola virus in West Africa.

I am always pleasantly surprised about how readily everybody responds to my invitations to contribute. As Editor I would very much like to thank all our members who make time to write by the end of Term or over the Christmas holidays. Mind you, it often takes quite a few reminder emails to convert this initial enthusiasm into actual copy received. And this issue wouldn't appear without the assistance of the Alumni & Development office and of course the production team at H2 Associates.

Conrad Guettler

editor@wolfson.cam.ac.uk



PROFESSOR SIR RICHARD EVANS

2015 marked the 50th Anniversary of Wolfson College's foundation as University College. Members returning for the first time in many years for the half-century celebrations in early July 2015 will have noticed the many changes that have taken place since their day, including new buildings and facilities and spectacularly improved garden displays. One thing that has not changed, however, is the College's open, friendly and all-inclusive atmosphere. Our current students come from some 80 different countries and our alumni are scattered across 120 different nations over the globe. As Cambridge's most cosmopolitan College, Wolfson takes special pleasure in welcoming back former students from almost every country in the world, from Albania to Zimbabwe, and our famously friendly porters and staff do everything they can to ensure that new students settle in quickly to life in Cambridge, which can be a rather strange and exotic experience for those who have never been to an ancient university before.

Since the College's foundation, some 7,689 degrees have been awarded to our students: 2,229 of our students have become Masters of Philosophy, and 1,706 Doctors of Philosophy; and 748 Bachelors of Arts degrees

FROM THE PRESIDENT

PROFESSOR SIR RICHARD EVANS reflects on Wolfson College in its 50th Anniversary year.



were also awarded, reflecting the fact that we are also a College for mature undergraduates; and 620 Masters of Studies were obtained through part-time study. Our students did extremely well in 2015; our undergraduates were awarded 16 Firsts in the Tripos examinations, making up 17 per cent of our candidates. Among our graduate students five candidates taking the Master of Advanced Study in Pure or Statistical Mathematics were awarded distinctions and two merits, out of a total of 11, and three out of our 11 LLM candidates

Members returning will have noticed the many changes that have taken place.

were awarded Firsts, along with both our candidates for the Master's degree in Corporate Law. Altogether we have given 31 prizes this year for a first class or a distinction in University Examinations, our best-ever record.

After five decades of growth, the College has now reached maturity, and our 50th Anniversary fundraising campaign has focused on improving life for the students who are already here. A range of new scholarships and bursaries has been established, and work continues on refurbishing our accommodation to the high standards of comfort and low levels of environmental impact that the twenty-first century demands.

The College has achieved an enormous amount since its foundation, and can now look forward to the next half-century with optimism and confidence.

After five decades of growth, the College has now reached maturity, and our 50th Anniversary fundraising campaign has focused on improving life for the students who are already here.

NOTES AND NEWS

COLLEGE RESEARCH ASSOCIATES

Martin Allen and Mary Newbould

Wolfson's College Research Associates (CRAs) play an important role in enhancing the intellectual life of the College. Numbering around 80, and with an intake of new members each year, CRAs are drawn from a wide range of academic fields across the Arts, Humanities and Sciences. They bring a wealth of knowledge and expertise that enriches Wolfson's already vibrant culture of intellectual diversity and exchange, participating in many of its research-focused activities, such as the Lunchtime Seminar Series and Humanities and Science Society meetings.

Becoming a CRA provides a place to meet new contacts, share ideas and enhance both the social and intellectual aspects of life. Some new CRAs this year are Claudia Maritano, British Red Cross Research Fellow at the Lauterpacht Centre, Sir Denis O'Connor of the Institute of Criminology, and Dr Heather Strang, Director of the Police Executive Programme at the same institute.

Many CRAs find their association a good means to interact with an intellectually lively group of individuals, sharing in the stimulating calendar of events Wolfson organises and hosts. Social activities are as important as those providing outlets for research. CRAs both benefit from Wolfson membership and enliven the College's intellectual and social life.

VICE-PRESIDENT

Graham Allen

Graham Allen became the College's Vice-President on 1 October 2015, in succession to Professor John Naughton. His career in university administration began at the Open University and in 1983 he joined the central administration at Cambridge. He was appointed Deputy Secretary General of the Faculties in 1999, the year he became a Fellow of Wolfson. He was Academic Secretary of the University from 2002 until September 2015.

His major task will be to manage the process for the election of the College's next President to succeed Professor Sir Richard Evans in October 2017. This will begin in earnest later this year. Graham considers that "the ability to engage with the College's distinctive openness and international outlook, as well as academic credibility and boundless energy, will be key criteria for the next President." The



move to a fixed-term presidency of seven years and the growing importance of development and alumni relations mean "there is little time to learn the ropes or relax. The President also needs to be able to represent the College's interests in a climate of change, as well as opportunity, for the University."

In addition to deputising for the President, the Vice-President serves on all the principal College committees. Graham considers it important to act as a "critical friend" to the full-time Officers and to engage with the wider Wolfson community.

News in Brief

SENIOR MEMBER AND FORMER PRESS FELLOW

Terry Macalister won a Campaign of the Year prize at the British Journalism Awards in December 2015. He was named with colleagues at *The Guardian* for their series on fossil fuels and climate change.

STUDENT DANNI WHITE won the 2015 Wildlife Poetry Competition held by the Wildlife Trust.



EMERITUS FELLOW Brian Moore was awarded an Honorary Doctorate from Adam Mickiewicz University in Poznan, Poland.

PAST VICE-PRESIDENT

John Naughton

My Vice-Presidential term in Wolfson ran from 2011 to September 2015 when I handed over to Graham Allen, who brings to the College his years of experience as a senior university administrator.



©Phil Mynott

A longer reflection on my term can be found online on WolfsonPlus (www.wolfson.cam.ac.uk/alumni/wolfsonplus) but I'd like to single out a few highlights: becoming acting President whilst the President took a sabbatical term to coincide with his research leave from the History Faculty; learning a great deal about the workings of the College by sitting in on all its committees; and most importantly, writing the College's first strategic plan; and organising the 50th Anniversary lecture series.

I remain involved in the 'Conspiracy and Democracy' research project at CRASSH and also lead their project on the implications of digital technology for democracy.

My Vice-Presidential term in Wolfson ran from 2011 to September 2015 when I handed over to Graham Allen...

SENIOR PRO-VICE-CHANCELLOR

Professor Duncan Maskell

Professor Maskell has been a Fellow of Wolfson since 1998 and last August he became Senior Pro-Vice-Chancellor in charge of Planning and Resources for the University. The photograph shows him (left) with the Vice-Chancellor (centre), Professor Sir Leszek Borysiewicz, and the Senior Proctor (right), David Goode, all three members of Wolfson.



Jonathan Settle

His scientific interests are in exploring the host-pathogen relationship in a range of diseases using genomics tools. After working in industry and co-founding three biotech companies, he was at the University of Oxford and Imperial College London, before in 1996 becoming the first Marks and Spencer Professor at the

Department of Veterinary Medicine, and eventually Head of the School of the Biological Sciences.

STUDENT Matthew Toseland, a mature undergraduate student, was awarded The British Computer Society Annual Student Prize last August.

THE PRESIDENT

Professor Sir Richard Evans has been awarded the British Academy Leverhulme Medal and Prize for Humanities and Social Sciences for 2015 for his significant contribution to the field of Modern German History.

JUNIOR RESEARCH FELLOWS Elif Cetin and Rasha Rezk have achieved the status of Associate Fellowship of the UK Higher Education Academy – on the same day that they were admitted to their College Fellowship!



©The British Academy

SIR RICHARD EVANS



©Sysbio Cambridge

STEVE OLIVER

FELLOW Steve Oliver, Director of the Cambridge Systems Biology Centre, was awarded the 2016 Marjory Stephenson Prize by The Microbiology Society.

STUDENT Ben Laws was awarded the John Sunley Prize by the Howard League for Penal Reform 'to celebrate excellence and impact of postgraduate research into penal issues.'

JUNIOR RESEARCH

FELLOW James Westbrook has received the 2015 Terence Pamplin Award for Organology given by the Musicians' Company.

MEET THE COLLEGE

Wolfson has a wide-ranging membership which forms a diverse and international community. *Ring True* profiles a selection of its members.

MICHAL BARABAS MPhil STUDENT



Michal comes from Prague, Czech Republic and is studying for an MPhil in Clinical Science, after completing a BSc in Pharmacology at UCL. He elaborates: "My interest in the clinical relevance of medical sciences progressed into my decision to study Medicine, and I was fortunate enough to gain a place here at Wolfson."

He co-chaired the 2014 June Event committee and met many of the College staff. "They are the essence of Wolfson's unique friendly atmosphere, which comes to life at the College bar where I occasionally work," he explains. The rest of his free time is devoted to playing ice hockey for the University team, of which he is currently President, or rowing for Wolfson.

ANNA DEMPSTER COLLEGE RESEARCH ASSOCIATE

Anna is the Head of Academic Programmes at the Royal Academy of Art where she is responsible for Courses, Classes and Academic Programmes. She joined Wolfson as a CRA from Sotheby's Institute where she led the MA Unit in Art Business, Finance and Management, saying: "I've had the privilege of working both at the centre of the commercial art world and experiencing the heart of contemporary culture and artistic practice."

Her research and teaching focuses on entrepreneurship, marketing and management in the creative industries.



She explored parallels with financial services in her 2014 book *Risk and Uncertainty in the Art World*.

"It's exciting to be at Wolfson at a time when the College is brimming with energy and creativity. I'm particularly pleased to be part of the Wolfson Fine Arts Committee and hope to contribute to its future programme of exhibitions and events for all members of the College."



NORA ZIVKOVIC STUDENT AND WCSA GREEN AND CAMPAIGNS OFFICER

Nora is studying for an MPhil in Environmental Policy with a Cambridge Trust Pexim Scholarship. Her degree in International Relations from the London School of Economics "taught her to appreciate the difficulties in reaching agreement on environmental issues."

"Wolfson is a great place to be at, as one of the greenest colleges of the University," Nora says, "and my WCSA position offers a great opportunity to contribute and foster positive changes. Wolfson is already doing well in this domain," she explains, "but we could expand our recycling and have instigated, for example, a compost bin trial run."

MARILYN MOTLEY ACCOMMODATION & CONFERENCE MANAGER

I came to work at Wolfson College in 1992 after several years at home raising a family. My first job here was for 16 hours a week doing the Purchase Ledger. After a few months I was asked if I would like to deal with Accommodation and have never looked back. Over the years I became full-time and took on the Conferencing side and then Housekeeping.

The work has brought me into contact with so many students, Fellows, Senior Members, Visiting Academics and Alumni over the years. I have always enjoyed the job's variety such as sorting out accommodation problems and helping with arranging a lunch or dinner. And the staff here is a great plus – it really is like being part of a family.



LYNN HIEATT

SENIOR MEMBER

As Senior Member for fifteen years, Lynn is “still learning about the College, it’s such a vibrant place, with so much going on.” She came to the UK from the University of Wisconsin and made her career at Cambridge University Press, from freelance copy-editor to Bible Publishing Director, and finally HR Director. She is clear her years in academic publishing give her a special perspective when meeting Wolfson students and Fellows to discuss their research interests, which may end up in one of the Press’s journals or books.



Lynn takes advantage of Wolfson’s rich offerings of lectures and seminars, art exhibits and music, catering and beautiful gardens. She adds: “In my new role as Senior Member Observer on

Governing Body, I will learn about the operation of the College, the better to support Wolfson’s work.”

JIA LU

PHD STUDENT

After an MSc at Imperial College London, Jia continued his interest in virology. He says: “Viruses are excellent biological models. Studies of these little



creatures have not only led to better prevention and cures for infectious diseases, but also deepened our understanding of other living organisms, including ourselves.”

Apart from studying norovirus biology in Cambridge, Jia volunteered last summer to work in a laboratory in Sierra Leone, using next-generation sequencing technologies to help bring an end to its devastating Ebola virus epidemic. He felt that “as virologists we should contribute as we can, even though I had neither studied sequencing nor the Ebola virus during my PhD.” Jia is grateful for his Medical Research Studentship: “Wolfson has been very generous and helpful throughout my PhD, and I am honoured to belong to this great community.”

DANA TSUI

JUNIOR RESEARCH FELLOW

Dana’s research aims to improve cancer care and she explains: “If a person has a tumour in their body, cancer DNA can be found in their blood, and simply taking a blood sample allows us to study the genetic code of cancer.”



After completing her PhD in Hong Kong, Dana joined the Cancer Research UK Cambridge Institute to use her expertise in prenatal diagnostics to improve cancer management. She was elected a JRF in 2014 and says: “Joining the Wolfson family takes my Cambridge experience to a new level. Everyone is so inspiring, and the College is a great place to share, experience and learn.” Dana also serves on the Fellowship and Membership Committee, helping to bring new members to the College.

DUNCAN OMANGA

VISITING FELLOW

Duncan Omanga joined Wolfson from Moi University, Kenya where he is head of department in Publishing and Media Studies. “I am researching social media and how Twitter is refashioning how Chiefs interact with villagers,” he elaborates, having given a seminar on the subject. He is also preparing a book on editorial cartoons and framing of terrorism and print cultures in Africa.

He is supported by the Centre for African Studies and he thanks Wolfson for “graciously granting me a Visiting Fellowship to accompany my stay in Cambridge.” He considers Wolfson a great place “with its friendly atmosphere so conducive to research.



Its cosmopolitan environment has actually made me meet more Africans from different countries than I would normally meet in my home country. I feel honoured to be in Cambridge.”

SARAH-JANE TOLLAN BA STUDENT

After a school career in the Sciences, and a brief fling with Medicine, Sarah-Jane answered the call of an English degree at Cambridge. "Wolfson is the ideal home for me: it's the perfect balance between offering a supportive environment for mature students, whilst simultaneously gifting you with the intensity of a Cambridge degree."



Heavily involved in student journalism, Sarah-Jane writes regularly for student newspapers, enjoying a successful term as Theatre Editor for *Varsity*, and now Culture Editor for *The Cambridge Globalist*. "My writing has been noticed, and I've received offers to contribute to websites and magazines. Cambridge has given me a strong foundation to work in the industry after my degree."

Wolfson's multicultural environment has spurred her on to learn Mandarin. "Being at Wolfson has been the most stimulating experience of my life: I've been given a chance to explore and realise my passions in an environment that is always encouraging and accepting."

NICK FRASER MPhil STUDENT

Nick arrived at Wolfson after studying Economics at Warwick, saying, "The more I explored my undergraduate degree, the more I kept coming back to the behavioural side and what makes people tick." This led Nick to look for a course that would combine this interest with skills directly applicable to a professional career. "Studying Management in a place of such rich heritage provides a unique theoretical underpinning to my career aspirations. Wolfson's particularly diverse mix of people and perspectives adds a lot of value to my studies."

He has also become a rower at Wolfson: "Thanks to the enthusiasm, patience and guidance of the members, we quickly progressed to become one of the most



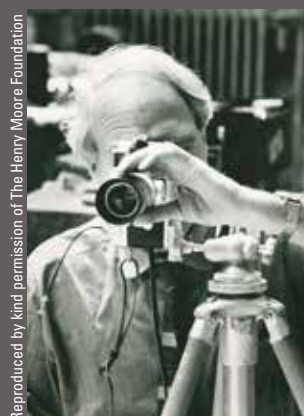
competitive novice boats on the water. It has definitely been one of my most rewarding experiences here and I hope it continues."

CULTURE AND SPORT

ART AT WOLFSON

Margaret Greeves, Emeritus Fellow

All available rooms were used as exhibition spaces in the 50th Anniversary year and the College's 50-year history was recorded through painting and video in the Gallery.



Reproduced by kind permission of The Henry Moore Foundation

MOORE ADJUSTING THE FOCUS OF HIS LEICA CAMERA, c. 1971.

The exhibition *Richard Deacon: This is where ideas come from*, visited by 800 people over the summer, was followed by *Henry Moore and Photography*, an exploration of the world famous sculptor's use of the camera at different stages in the development of his monumental outdoor commissions. Both these shows were supported by The Henry Moore Foundation.

The Royal Academy at Wolfson, a splendidly generous loan of paintings by more than a dozen RAs, continued until December and was followed by the installation of *Kate Green: Where Do Ideas Come From*. Kate is a local artist in mid-career who works in watercolour and textile in a colourful and poetic manner.

Honorary Fellow Anthony Green gifted his painting *Early Spring: Looking round the Garden* to the College.



©Anthony Green RA

EARLY SPRING: LOOKING ROUND THE GARDEN, ANTHONY GREEN RA, 1994



ROWING

Rhys Coleman, Club Captain

Valtteri Tulkki, Men's Captain

Bianka Seres, Women's Captain

Zenas Van Veldhoven, Novices' Captain

WCBC was extremely proud to christen our new Stampfli the *Ring True* last May and we are even more proud to have gone on to win so many races in her. Michaelmas Term has seen another huge influx of novice rowers and coxes to WCBC and we started training our new squads in earnest. The First Novice Men's crew finished a nail biting second at Queens' Ergs, missing out on the top spot by less than a second. Our rowers then went on to put in strong performances at Emma Sprints and Clare Novice Regatta and good places for our novices and senior crews at the Fairbairns Cup rounded off an action-packed term.

Our Novice Women's First Boat equalled their position from last year and our intake of new female rowers allowed us to put out a Second Women's Novice VIII+ who finished only seven places behind their counterparts.

MICHAELMAS MUSIC

Lynette Alcántara, Director of Music

Michaelmas Term included 14 performances, rounding off with a flourish at Great St Mary's Church on St Cecilia's Day, with a concert for choirs, brass and organ to celebrate our 50th Anniversary year. *Gloria! Alleluia!* featured Wolfson Choir and Chamber Singers, guest choir Voix de Vivre, Prime Brass and organist Richard Pearce, in works including John Rutter's uplifting *Gloria*.

Music and Madeira audiences were spellbound by South African marimba

virtuoso Magdalena de Vries, and were put in a festive mood by Cambridge University Brass Band. Early Music events included a three-hour marathon of the complete keyboard works of Duphy and a recital by Eleanor Harrison (violin) and Dan Tidhar (harpsichord). Our varied lunchtime concerts included Prime Brass's CD launch, Melody Lin (cello), Simone Maurer (flute) accompanied by Juan Pablo Robledo del Canto, and Sebastian Stanley (piano) with Jonathan Parkin (clarinet).



Back row (L-R): Julian Robertshaw, James Hussein, Nora Zivkovic, Jason Too, Caroline Smyth, Usman Javed.

Front row (L-R): Martina Fernandez Jarrin, Jason Phan, Ahmed Elmi, Justin Yang, Louis Ashworth.

WCSA NEWS

Jason Phan, Vice-President

The new WCSA Committee is determined to enhance the sense of community at Wolfson and bring fresh energy to the College. Lent Term kicked off with a newly-established Refreshers' Week to set the tone for the remainder of the year. In order to meet the needs of the student body, the Committee aims to host drop-in sessions and increase transparency. We are focused on ensuring the welfare of all students

and on hosting a range of events catering to different groups within the College, such as a Parents' Dinner, LGBT Socials and International Women's Day celebrations. The Committee also plans a variety of exciting projects to improve life at College for both current and future students.

We hope that everyone has an enjoyable and rewarding year ahead.

FROM THE DEVELOPMENT DIRECTOR

KAREN STEPHENSON

Wolfson's 50th Anniversary Campaign

WOLF50N

Fran May



The College is enormously grateful to everyone who continues to give so generously to Wolfson's 50th Anniversary fundraising campaign, which will run until 30 September 2017, to be coterminous with the President's term of office.

We are well over two-thirds of the way to reaching our objective of £5 million for scholarships and the refurbishment of student accommodation. With your help, we can reach this ambitious goal, and help our outstanding students to achieve their aspirations. You can learn about their inspirational work at www.wolfson.cam.ac.uk/50/fundraising.

Many members have set up monthly gifts to the College, and every penny really is very much appreciated. The Senior Members' WOLF50N Fund was the initiative of Dr Margaret Whichelow, and many Senior Members and Emeritus Fellows continue to contribute to it. This important on-going project has already achieved the significant aim this year of enabling one Master's student to remain at Wolfson for his PhD, and more students will benefit in future.

With your help, we can reach this ambitious goal, and help our outstanding students to achieve their aspirations.

We are particularly grateful to The ALBORADA Trust, which has made an unprecedented gift of £1.5m to support, over the next ten years, up to 50 three-year ALBORADA Scholarships for Veterinary and Medical Science students at Wolfson. This transformative gift was granted for our 50th Anniversary campaign, and will make a substantial difference to Wolfson's ability to attract and retain the world's best students in their fields, irrespective of financial background. You can read more about The ALBORADA Trust's generosity at <http://bit.ly/1T0ilGP>. The College is particularly grateful to our Honorary Fellow Miss Kirsten Rausing who, together with her other Trustees, has made this marvellous gift possible.

Looking forward, you are still able to contribute to our 'Wolfson in 50 words' project by telling us – in 50 words, or thereabouts – what Wolfson means to you. Send your entries to communications@wolfson.cam.ac.uk. You can see other entries at www.wolfson.cam.ac.uk/alumni/50words.

Thank you so much to everyone who joined us for the many events to mark Wolfson's 50th Anniversary. Reminiscences from some of the members who came back to College for the celebratory weekend can be found online at

©Caroline Hancox





Thank you so much to everyone who joined us for the many events to mark Wolfson's 50th Anniversary.

Professor Irene Ng, giving the penultimate 50th Anniversary Lecture.

www.wolfson.cam.ac.uk/alumni/WolfsonFilm and, if you missed any of the special 50th Anniversary lectures, you can find audio and video podcasts of the series at www.wolfson.cam.ac.uk/50/lectures.

As always, we are delighted to welcome Wolfson members back to College for lectures, receptions and Formal Hall. A full list of members' privileges can be found online at www.wolfson.cam.ac.uk/alumni by clicking on the 'Rights and Privileges' link.

Thank you once again to all those who continue to give so generously to Wolfson; your support really is very much appreciated indeed.

www.WolfsonGiving.com

WOLFSON IN 50 WORDS

I have really enjoyed my time at the Science Society, formal dinners and on committees, and feel very grateful for this opportunity. Wolfson is a wonderful place where you feel welcome from the first moment; I have met extraordinary people and had many interactions that greatly contributed to my research.

Dr Maria Muñoz Caffarel, Former Fellow (2009)

Wolfson grants wonderful opportunities to bond with people of diverse cultural and educational backgrounds. The end result is to become a more effective contributor to society and enhance my appreciation of the many things life offers. I hope I've been able to transfer my Wolfson values to my family and friends.

Mr Dario Verdugo, Wolfson Course (1979)

Wolfson was the students who came from all over the world. Wolfson was the Porters always ready to help and offer a smile. Wolfson was the morning and evening walks into the School. Wolfson was my rooms, each with its own personality. Wolfson is a wonderful memory.

Mr Malcolm Field, Alumnus (1998)

Being in the first cohort of part-time MEd students was a most interesting experience. Choosing to apply to Wolfson College proved to be an excellent decision and one full of fond memories as I spent every Wednesday in Term-time for two years, travelling between Kingston upon Hull and Cambridge.

Dr John Barnes, Alumnus (1992)

President Sir Richard and Lady Evans kindly held a year-end lunch party at the President's Lodge on 31 December 2011 for those who stayed at the College. We all truly appreciated it. That is one of my best memories of Wolfson.

Mr Shinji Fukuda, Former Visiting Fellow (2011)

To see the full collection of Wolfson in 50 words entries, you can scan the QR code with your mobile, or visit www.wolfson.cam.ac.uk/alumni/50words





CLIMATE CHANGE AND UK GARDENS

PHILIP STIGWOOD, HEAD GARDENER

Predicted climate change effects, such as warmer winters and changes in rainfall and storm patterns, are likely to increase further the risk of plant disease and the spread of invasive species. The UK growing season has increased on average by more than a day a year over the last 20 years. Warmer winters make lawns and weeds grow all year round now. December 2015 was the warmest on record in the UK, and November brought many damaging storms. Pests and pathogens have also become more prevalent, and gardeners now have to deal with these. On the positive side, we are able to grow some more tender plants here in Cambridge, such as Mexican Sage or Agapanthus.

ALUMNI REUNION

SATURDAY 24 SEPTEMBER
2016 REUNION

1966 This year's quinquennial and decennial reunion on
1971 Saturday 24 September will begin with brunch before
1976 the annual Alumni Lecture. Afternoon tea will be served
1981 and there will be a tour of the College before dinner in
1986 Hall, with Grace sung by the Wolfson Chamber Singers.

1991 If you arrived at Wolfson in the academic years
1996 beginning 1 October 1966, 1971, 1976, 1981, 1986,
2001 1991, 1996, 2001, 2006 or 2011, your invitation will be
2006 sent to you by email later this year. Please be in touch
2011 with communications@wolfson.cam.ac.uk if we do not
have your current email address. Online booking will
open in June.

FUTURE EVENTS

EVENTS ARE OPEN TO ALL COLLEGE MEMBERS, EXCEPT WHERE NOTED.

28 April	Lee Seng Tee Distinguished Lecture
20 May	Music and Madeira
5 June	President's Cup cricket match
10 June	May Bumps marquee
11 June	Boat Club Dinner (<i>by invitation to Boat Club members and Friends: contact alumni@wolfson.cam.ac.uk for information</i>)
12 June	2pm: Benefactors' Reception (<i>by invitation to all donors in the current year</i>)
12 June	3pm: College Garden Party
12 June	7.30pm: Mary Bevan Recital
8 July	Guest Night
24 September	Alumni Reunion (<i>by invitation: see information above</i>)
17 November	Commemoration of Benefactors' Dinner (<i>by invitation to all Morrison Society members, with a guest, and major benefactors in the current year</i>)

Please make sure that we have your contact details, as invitations will be sent by email: communications@wolfson.cam.ac.uk
www.WolfsonEvents.com

RingTrue

THE NEWSLETTER OF
WOLFSON COLLEGE
CAMBRIDGE

WOLF5ON

Wolfson's 50th Anniversary Campaign

Wolfson College
Barton Road Cambridge CB3 9BB
www.wolfson.cam.ac.uk

Wolfson College is a registered Charity, number: 1138143

CONTACT US

Development Director: Karen Stephenson
development@wolfson.cam.ac.uk
01223 335922

Events, Wolfson Network and alumni groups: John Mueller
alumni@wolfson.cam.ac.uk
01223 335929

Communications and news: Jamila Khalil
communications@wolfson.cam.ac.uk
01223 762546

Publications: Conrad Guettler
editor@wolfson.cam.ac.uk

The Alumni & Development Office
Wolfson College
Cambridge CB3 9BB

www.facebook.com/WolfsonCollege
www.twitter.com/WolfsonCam
www.WolfsonNetwork.com