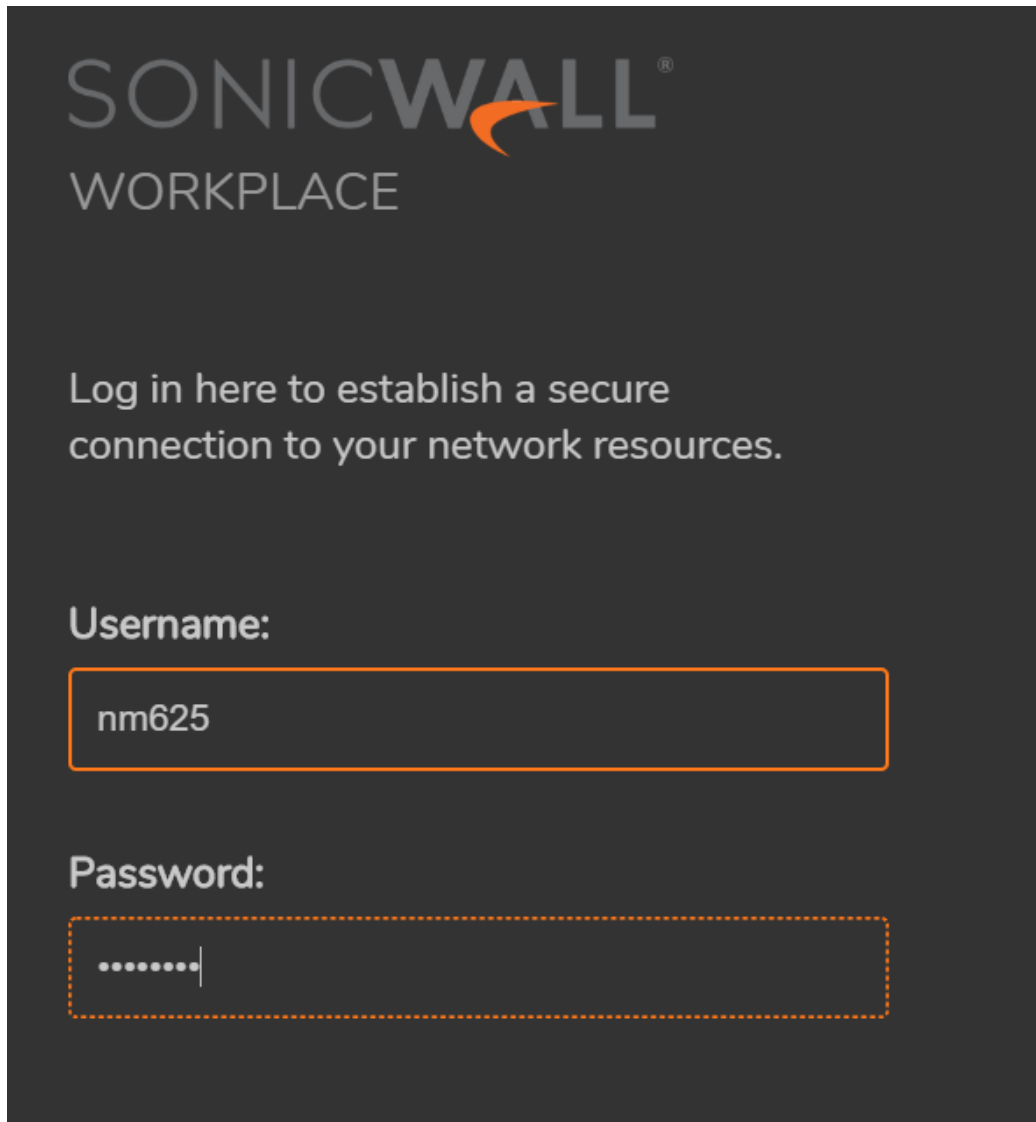


If you are using a PC(not a Mac) go to <https://www2.wolfson.cam.ac.uk/files/wolfson-vpn.exe> download and install the VPN connector.

On a Mac (or anything else not PC) just follow the instructions when you go to the website.

Open a browser and go to <https://vpn1.wolfson.cam.ac.uk/>

Log into the following screen with your normal login name and password



SONICWALL[®]
WORKPLACE

Log in here to establish a secure connection to your network resources.

Username:
nm625

Password:
.....|

On the first login you might see the following screen. Chose install. This will download a file that should appear. Run the file.

Secure Endpoint Manager

Click **Install** to access resource on the corporate network. This process will set up components on your computer used to access the corporate network and ensure that they are kept up-to-date on this computer.

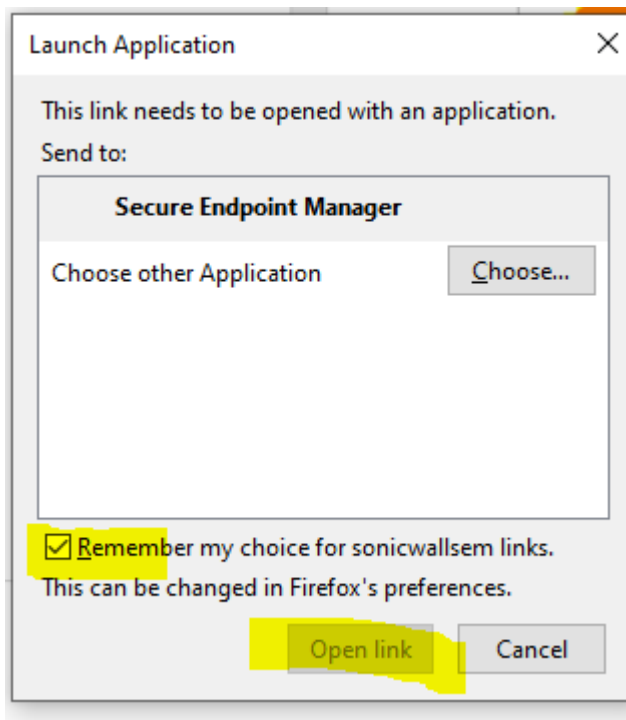
Clicking Log out will end your session.



Important: Your personal firewall may ask you to grant permission to this program to access the internet. You must "Unblock" or "permit" this request for the installation to succeed.

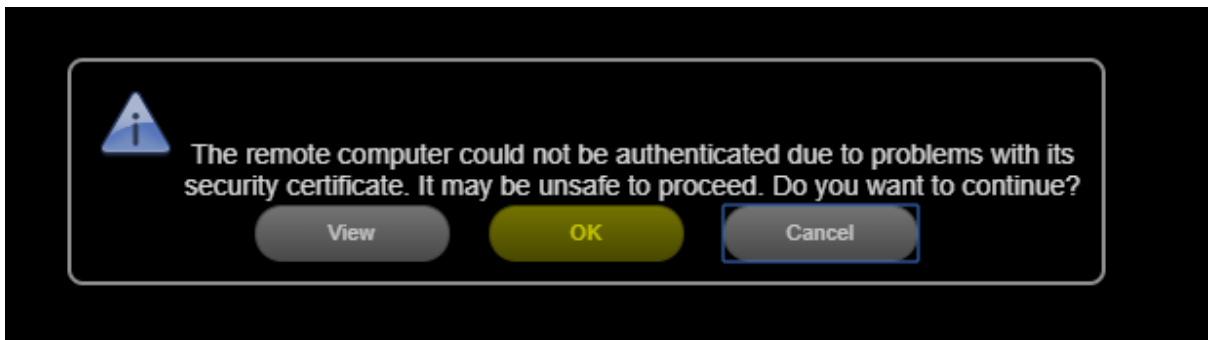
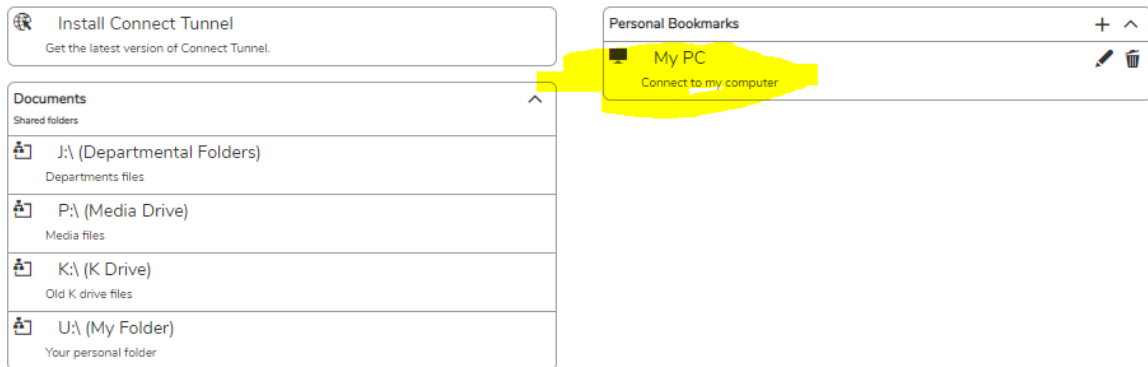
If you have not accepted the "Secure Endpoint Manager" prompt and landed on this page, please cancel all prompts and refresh/reload the current page to start over.

On Firefox you might well see the following too, click on the highlighted



Click on My PC, the following should appear. Click OK

To access a drive and its files, click on its name from the list under Documents below.



You should then be connected to your computer. You will probably be asked trust it again.

If you want to change the screen resolution:

You can adjust the size of the window you get or chose fullscreen.

Click on the pen symbol on the page with My PC.



Click on screen resolution and choose the resolution you want. Then scroll down and click save.

Use this area to add or edit a shortcut in the Bookmarks group.

Position:	<input type="text" value="1"/>
Name:*	<input type="text" value="My PC"/>
Address:*	<input type="text" value="192.168.64.57"/>
Description:	<input type="text" value="Connect to my computer"/>
Shortcut type:	<input type="text" value="RDP shortcut"/>
Client type:	<input type="text" value="Browser only"/>
Screen resolution:	<input type="text" value="Full screen"/>
Color depth:	<input type="text" value="16-bit"/>
Connection type:	<input type="text" value="WAN (10 Mbps or higher with high latenc"/>
Keyboard layout:	<input type="text" value="Use browser locale"/>

If you choose full screen and want to close the session you will need to click on the blue S at the top of the screen.